



PROSPECT ON MAIN
HATTIESBURG, MISSISSIPPI

OFFICE SPACES

*522 Main Street
Downtown Hattiesburg*

STARTING AT \$1,000 PER MONTH



ABOUT THIS PROPERTY

Newly constructed with exquisite attention to detail honoring the historical aspects of one of Hattiesburg's oldest buildings. Three fully furnished private offices are available for lease in the heart of Downtown. The property is within walking distance of the post office, banks, and several restaurants. Each office includes access to a shared conference room.

Monthly rent is \$1,000 per office (\$1,100 for the corner office). One-year minimum lease under a triple net agreement with utilities and one gated, covered parking space included with each office.

[**LEARN MORE!**](#)



CONTACT DETAILS

601.408.1601

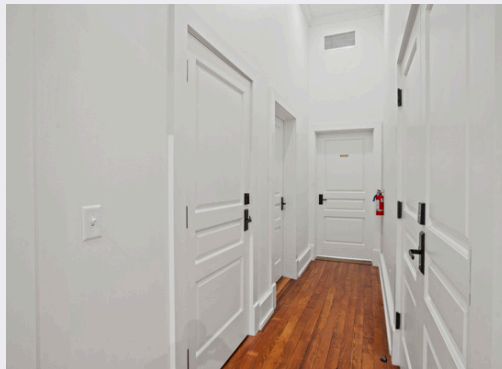
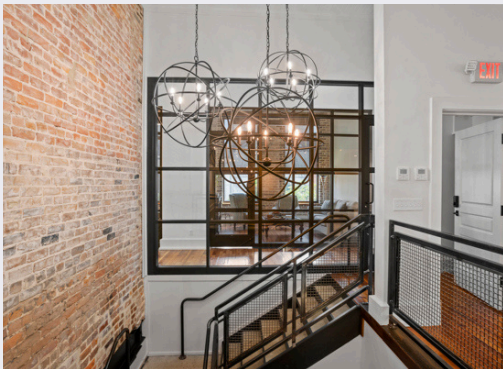
info@ProspectonMain.com

ProspectOnMain.com



PROSPECT ON MAIN
HATTIESBURG, MISSISSIPPI

OPEN PLAN
522 Main Street
Downtown Hattiesburg
\$2,100 PER MONTH



ABOUT THIS PROPERTY

This 1,822 sq ft open plan rental space offers a flexible layout ideal for a variety of uses. Open to buildout design with VERB Architecture, allowing you to tailor the space to fit your needs.

Located in the heart of Downtown Hattiesburg's business & arts district, the property offers immediate access to dining, live music, and community events, along with convenient proximity to the post office and banks. Optional covered, gated parking is available through the City of Hattiesburg's West Pine Street Parking Garage.

Offered at \$2,100 per month triple net lease.

[**LEARN MORE!**](#)



CONTACT DETAILS

📞 601.408.1601

✉ info@ProspectonMain.com

🌐 ProspectOnMain.com



PROSPECT ON MAIN
HATTIESBURG, MISSISSIPPI

RESIDENCE
522 Main Street
Downtown Hattiesburg

\$2,700 PER MONTH



ABOUT THIS PROPERTY


Stunning, one-of-a-kind, new construction, fully furnished 1,925 square foot residence featuring a fully equipped commercial kitchen, two bedrooms, and 1 bathroom with a walk-in shower spa. Comfortably sleeps up to six, offering a flexible, functional layout ideal for both living and entertaining. When not in use by day, a shared conference room can serve as a formal dining room. All utilities are included, along with two covered parking spaces in the West Pine Street Garage allowing for private entry.

Located in the heart of the Downtown Hattiesburg business and arts district, the property offers immediate access to dining, arts, music, and community events, along with convenient proximity to the post office and banks. Offered at \$2,700 per month. Minimum one-year lease.

[**LEARN MORE!**](#)



CONTACT DETAILS

 601.408.1601

 info@prospectonmain.com

 ProspectOnMain.com